



SKIN FIRMING WAND | 7 IN 1



Skin Scan & Personal
Routine Guide



SmartSonic Pulsation
Technology



MicroCurrent Face-Lifting &
Skin Smoothing Technology



Youthful Glow
Massage Technology



Red Light Active
Regeneration Technology



Thermo Deep
Warming Technology



Low-Voltage
Current

**Your
Facial**
Workout



**Create your personal
Skincare Routine**

and Download our GESKE App



GESKE Beauty Tech GmbH
Leipziger Platz 18
10117 Berlin Germany
info@geske.com, www.geske.com



GOOD TO KNOW

TIP 01

Hold the device from the metal bars at the side and rest it gently against your skin, with the lights facing your skin. It activates automatically when it touches the skin.

TIP 02

Always use our specially formulated Hydrating MicroCurrent Gel. Your skin must be wet to the touch for the MicroCurrent to be effective. Reapply the gel if your skin dries up.

TIP 03

The rotatable head can be adjusted to your movements and ensures the most efficient usage of the device. Remember to clean your device with our Organic Device Cleanser after every use.



Thermo Technology

Deep Warming



SmartSonic Pulsations

Lift & Revive



MicroCurrent

Instant Face-Lift



Auto Activation

Skin Contact-Based

2.5h charging time



Easy to adjust

Rotatable head



Red LED Light

Anti-Aging

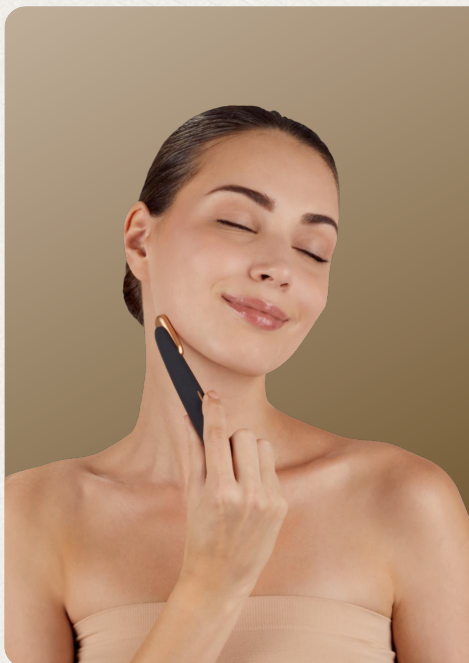


Rotatable Head

Easy to Adjust

MASTER THE FIRST STEPS

Experience instant skin glow: the SmartAppGuided™ Skin Firming Wand | 7 in 1 gives you firm, toned and radiant skin while preserving a youthful glow. The rotatable head of The SmartAppGuided™ Skin Firming Wand | 7 in 1 ensures that you do not miss a single spot!



FACE AND NECK LIFT

PREPARE

Start with a clean face and apply our specially formulated Hydrating MicroCurrent Gel.

ACTIVATE

The device activates the SmartSonic Pulsation and MicroCurrent Face-Lifting & Skin Smoothing Technology automatically when it comes into contact with the skin. Hold the device from the metal bars at the side and rest it gently against your skin, with the lights facing towards your skin.

LIFT

Glide the device over your chin, jawline, nose, cheeks, smile lines and forehead, repeating each motion several times on both sides of your face. Finally, glide it over your neck, while avoiding the throat.

FINISH

Rinse the device with water and spray it with our Organic Device Cleanser after every use.



YOUTHFUL HANDS LIFT

PREPARE

Wash your hands with a mild soap and pat them dry. Apply our Hydrating MicroCurrent Gel to the back of your hands.

ACTIVATE

The device activates the SmartSonic Pulsation and MicroCurrent Face-Lifting & Skin Smoothing Technology automatically when it comes into contact with the skin. Hold the device from the metal bars on both sides with the lights facing towards your skin.

LIFT

Glide the device three times down each finger until you reach your wrist. Next, glide the device in small circles covering all areas of the back of the hand. Repeat these processes on the other hand.

FINISH

Rinse the device with water and spray it with our Organic Device Cleanser after every use.

Create your personal Skincare Routine

and Download our GESKE App



Advanced App



Video Guided



AI Powered Skin Scan



Expert Tips



Personal Guide



In App Rewards



IMPORTANT SAFETY INFORMATION. READ BEFORE USE.

Read the safety information before first use. Keep both instructions for use.

Your product at a glance

Your product is a multi-functional skin firming device with MicroCurrent. It is safe to be used up to 3 times per week but not more than once per day. Please do not use more frequently. For maximal safety and ideal results, always follow your personalized Skincare Routine created by the GESKE Beauty App.

Notes on Use

Before using the device for the first time, this Safety Information and the Product Manual must be read in their entirety. Please make sure to save a copy of both as they contain important information on safe use as well as on technical and legal information requirements. The device is a skincare product for adults and not a medical device or a product with medical or other healing properties. Use of the device should always include observance of the personalized application recommendations from the GESKE Beauty App. The device is rechargeable and allows for convenient and wireless operation. It must be fully charged before the first use. All you need is the included USB charging cable. The initial charge can take up to eight hours. The cable must dock with both magnetic contacts on the device's designated metal contact points. If the charging cable does not attach by itself, connect it to the power and wait. This reactivates the magnetic effect and the contacts connect automatically. Make sure that the magnetic contacts only connect to the contact points of the device and not to other metallic surfaces.

Specifications

Materials: ABS, Silicone, PC, Aluminium Alloy, Zinc Alloy | **Storage temperature:** -5 - +60 °C/23-140 °F | **Battery:** Li-Ion 3.7V | **Battery Capacity:** 380 mAh | **Maximum Charging Current:** 350 mA | **Charging Voltage:** 5V | **Charging Time:** approx. 2.5 hours | **Operating time** differs depending on activated technologies & intensities. | **Interface:** USB | **Programs:** **Vibration:** 1 speed level, **MicroCurrent:** 1 intensity, **LED Light Technology:** 1 color, Heating, Touch Sensor

The product is not suitable for use under the following conditions:

If you have an implanted medical device or other electronic device such as a pacemaker, after laser treatment or chemical peeling, and after cosmetic facial surgery.

In the following cases, a consultation with a physician is necessary as to whether the product is suitable for you to use:

If you have a heart disease, and in case of pregnancy. The safety of use during pregnancy has not been established.

Further information on use:

The Skin Firming Wand will not work reliably if your skin is not moist. Reapply the serum if your skin dries up before your session is complete. Before using the MicroCurrent Face-Lifting & Skin Smoothing Technology, the product must be completely dry. Use of the MicroCurrent Face-Lifting & Skin Smoothing Technology only in combination with GESKE serums. Do not use the Microcurrent function on the chest area, around the eyes, midline of the neck, genital/groin area, or on red and inflamed skin, over birthmarks and enlarged blood vessels. Nothing is known about the long-term effects of Microcurrent. As a result of stimulation of the optic nerve, a flashing light may be perceived during use. If this persists when not using the product, seek medical advice. A slight tingling sensation may occur during application. Decrease the intensity of the Microcurrent to reduce or eliminate tingling. Electronic monitoring devices may not function properly while the device is in use. Never use the product while driving or operating heavy machinery. Do not poke any sharp objects into the product's openings. The product may only be used with a safety extra-low voltage (SELV) adapter. We recommend using standard IEC60335 power supplies to charge the device. Do not use the product on irritated or injured skin or open wounds (after any kind of injury), in the case of bacterial or viral infections of the skin (either in the usage area and elsewhere). This product is not intended to treat medical skin conditions or diseases. If you have medical skin conditions or diseases, consult your dermatologist before using this product. Do not use the product if it is 1) untypically warm, 2) mechanically damaged or deformed, 3) discolored. If pain and/or discomfort occurs during use, discontinue use and seek medical advice. The eye area is very sensitive: Be extra careful in this area and avoid any contact of the product with the eyelids or the eye itself. Only use the product as recommended in your personalized routine. For hygiene reasons, we recommend you do not share your product with anyone else. The product is intended for cosmetic use on the face, neck and décolleté. GESKE assumes no liability for harmful consequences arising from the use on other body areas or other improper use, connection to unsuitable voltage sources, contaminated conducting liquid or balls. Always make sure the plug and socket are completely dry before charging. Otherwise, electric shocks, a short circuit or fire may result. The product must not be used while connected to the power outlet.

Warnings

Risk of injury if used incorrectly!

Only use the product as described in the Quick Start Guide and video instructions. If you still have questions, please contact our customer support at support@geske.com.

Risk of injury due to fire/ignition!

Do not extinguish the product with water. Do not throw the product into fire.

Risk of injury due to defective batteries!

Improper handling of batteries can cause an uncontrolled exothermic reaction. In such a case, dispose off the entire product immediately and properly.

Risk of injury to children!

Keep the product out of the reach of children.

Risk of injury from electric shock!

Liquid can damage the charging circuit and endanger your health. Disconnect the product from the charging cable/circuit while cleaning.

Risk of damage from magnetic fields!

Magnetic fields can affect the mechanical and electronic components such as pacemakers, for example. Do not use the product directly over a pacemaker. Contact your treating physician for more information. Do not place cards with magnetic strips (e.g. credit cards) near the product, as the product's magnets may damage these.

Risk of damage due to changing surrounding temperatures!

Changing surrounding temperatures (e.g. after transport) may lead to the formation of condensation. In this case, do not operate the product until it has adjusted to the new surrounding temperature. Never expose your product to direct sunlight, extreme heat or boiling water.

Safe use up to a surrounding temperature of 50 °C/122 °F.

Risk of damage from charging too long!

Disconnect the charging cable from the circuit after each charging process.

Safe charging up to a surrounding temperature of 45 °C/113 °F.



Information on device disposal and WEEE. This electrical appliance was first released after August 13, 2005. In accordance with the European WEEE Directive and national regulations, the electrical appliances and electronic parts included in this delivery must not be disposed off via your household waste. At the end of the product life, they must be disposed off at a municipal collection point in order to ensure environmentally friendly disposal.

Notes on batteries / rechargeable batteries

In the context of distributing batteries and rechargeable batteries, in accordance with European regulations we are obliged to inform you, the consumer, of the following: You are legally obliged to return batteries and rechargeable batteries. After use, you can return them to us, take them to a municipal collection point, or deliver them to a local dealer free of charge. Batteries and rechargeable batteries are labelled as follows:



These symbols mean that the batteries and rechargeable batteries cannot be disposed off by you, the consumer, via household waste. Batteries and rechargeable batteries containing harmful substances are labelled with one of these symbols. The symbol consists of a crossed-out wheeled bin and the chemical symbol of the heavy metal which constitutes the main pollutant. In detail, the aforementioned symbols mean:

Pb = battery contains lead, Cd = battery contains cadmium, Hg = battery contains mercury

Notes on lithium batteries/rechargeable batteries

You can recognise lithium batteries and lithium rechargeable batteries through the chemical symbol „Li“. In addition to the information provided above, we would also like to point out the following: When disposing off lithium batteries or rechargeable batteries, either by returning them to us, taking them to a municipal collection point or handing them in to local retailers or public waste disposal companies, please ensure that they are completely discharged. We also request that you cover the contact surfaces on the battery marked „+“ and „-“ with adhesive tape to avoid the risk of fire.



GESKE Beauty Tech GmbH, Leipziger Platz 18, 10117 Berlin hereby declares that all electronic devices conform with the relevant conditions of the applicable European Directives 2014/30/EU and 2011/65/EU.

Limitation of liability

GESKE Beauty Tech GmbH and/or their retailers are liable for damages caused by intentional or grossly negligent behaviour of GESKE Beauty Tech GmbH, a representative or vicarious agent, in accordance with legal directives. With the exception of injury to life, limb or health, and breach of essential contractual obligations (cardinal obligations), GESKE Beauty Tech GmbH and/or their retailers are only liable for damages which can be attributed to intentional or grossly negligent behaviour. This also applies to indirect damages, in particular lost profits. Moreover, liability with regard to consumers due to an assumed guarantee, except in the case of intentional or grossly negligent behaviour, or where there is an injury to life, limb or health and a breach of essential contractual obligations (cardinal obligations) is limited to the typical, foreseeable damages on conclusion of the contract, and also to the level of the average damages typical for this contract. This also applies to indirect damages, in particular lost profits. With regard to companies, except in the case of injury to life, limb or health or intentional or grossly negligent behaviour by GESKE Beauty Tech GmbH, and/or its retailers liability is limited to the typical, foreseeable damages on conclusion of the contract, and also to the level of the average damages typical for this contract. This also applies to indirect damages, in particular lost profits. No liability will be accepted for damages due to: Non-compliance with this manual/improper use/Unauthorised alterations/ Technical modifications/Use of unapproved spare parts/Use of unapproved accessories Claims for liability due to the German product liability legislation remain unaffected.