






# SONIC LED FULL-BODY BRUSH & INTENSIVE EXFOLIATOR | 9 IN 1

 SmartSonic Pulsation Technology

 Youthful Full Body Glow Massage Technology


 Ultra Hygienic Deep Cleansing

 Super Soft & Flexible Silicone Tips

 Cushioning Soft Touch Experience

 Intensive Exfoliation Technology

 Adjustable Telescoping Handle

 Easy-Exchange Cleansing Head

 Red Light Active Regeneration Technology

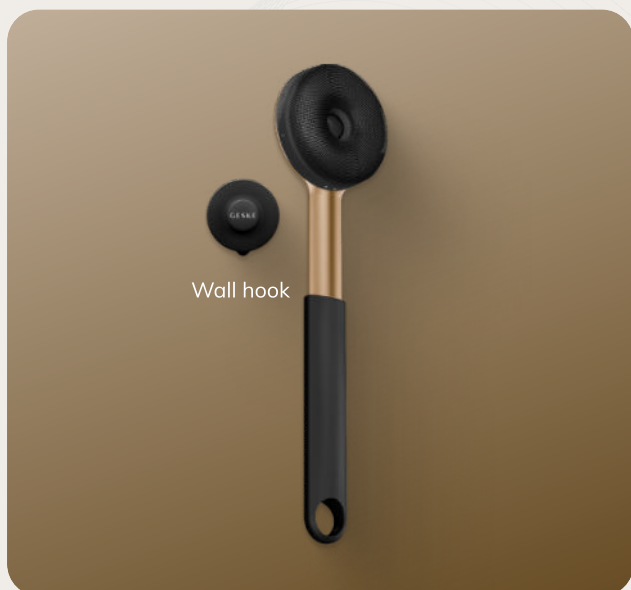
**Luxe Body**  
Cleanse



**Create your personal Skincare Routine**  
and Download our GESKE App



GESKE Beauty Tech GmbH  
Leipziger Platz 18  
10117 Berlin Germany  
[info@geske.com](mailto:info@geske.com), [www.geske.com](http://www.geske.com)



## GOOD TO KNOW

### TIP 01

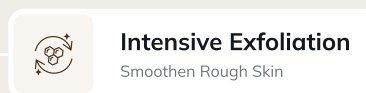
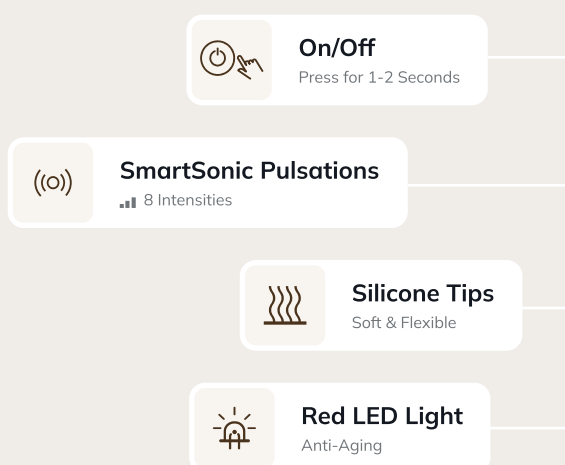
Flip your brush's attachment to benefit from the intensive exfoliation surface. Use it only on calluses and areas of the body prone to rough skin, such as feet, knees and elbows.

### TIP 02

The unique, adjustable telescopic handle makes it easy to reach all parts of your body, including your back. You can also use the attachment without the handle if this is more convenient to you.

### TIP 03

Clean your device with our Organic Device Cleanser after every use.



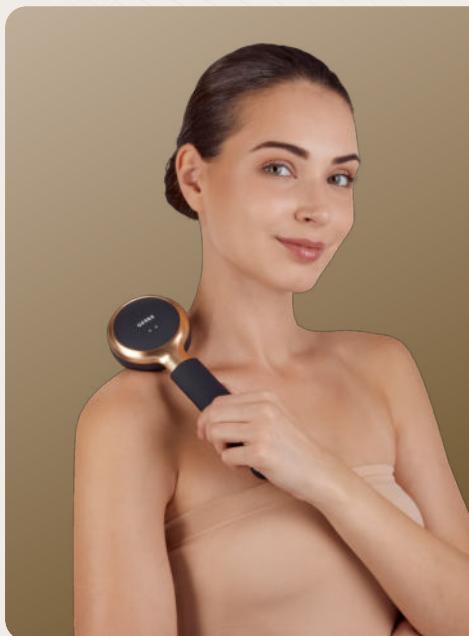
**Intensive Exfoliation**  
Smoothen Rough Skin



**Telescopic Handle**  
Easy to Adjust

## MASTER THE FIRST STEPS

Meet your new skincare powerhouse: the Sonic LED Full-Body Brush & Intensive Exfoliator | 9 in 1 is a cleansing, massage, and exfoliation device for the entire body and the key to creating your very own home spa.



### FULL BODY CLEANSE

#### PREPARE

Lather your moistened body with the cleanser of your choice.

#### POWER ON

Turn the device on by holding the power button for 2 seconds. Select your desired intensity of SmartSonic Pulsations by using the plus and minus buttons.

#### CLEANSE

Move the brush all over your body, using gentle circular motions. The Youthful Full Body Glow Massage Technology makes your skin soft, smooth, and radiant.

#### FINISH

Turn the device off by holding the power button for 2 seconds. Rinse the device thoroughly with water. Clean your device with our Organic Device Cleanser after every usage.



### TARGETED EXFOLIATION

#### ELBOWS

Flip your brush's attachment and allow the intensive exfoliator to gently buff the rough skin on your elbows and polish them to smooth perfection. You can also detach the head for more flexibility.

#### KNEES

Bid goodbye to rough patches on your knees and unveil smooth, soft skin with the exfoliation side of your brush.

#### FEET

The Intensive Exfoliation Technology effectively removes dead skin cells and smoothes rough and callused skin on your feet, leaving them feeling silky soft.

#### FINISH

Apply moisturizer. Rinse the device thoroughly with water. Clean your device with our Organic Device Cleanser after every usage.

### Create your personal Skincare Routine

and Download our GESKE App



## IMPORTANT SAFETY INFORMATION. READ BEFORE USE.

Read the safety information before first use. Keep both instructions for use.

### Your product at a glance

Your product is a multi-functional body brush. It is safe to be used up to 3 times a day; please do not use more frequently.

### Notes on Use

Before using the device for the first time, this Safety Information and the Product Manual must be read in their entirety. Please make sure to save a copy of both as they contain important information on safe use as well as on technical and legal information requirements. The device is a skincare product for adults and not a medical device or a product with medical or other healing properties. Use of the device should always include observance of the personalized application recommendations from the GESKE Beauty App. The device is rechargeable and allows for convenient and wireless operation. It must be fully charged before the first use. All you need is the included USB charging cable. The initial charge can take up to eight hours. The cable must dock with both magnetic contacts on the device's designated metal contact points. If the charging cable does not attach by itself, connect it to the power and wait. This reactivates the magnetic effect and the contacts connect automatically. Make sure that the magnetic contacts only connect to the contact points of the device and not to other metallic surfaces.

### Specifications

**Materials:** ABS, Silicone, Aluminum Oxide | **Storage temperature:** -5 - +60 °C/23-140 °F | **Battery Capacity:** 380 mAh (Brush Head), 45 mAh (Handle) | **Maximum Charging Current:** 350 mA (Brush Head), 50 mA (Handle) | **Charging Voltage:** 5V | **Charging Time:** approx. 2.5 hours | **Operating Time:** Operating time differs depending on activated technologies & intensities. | **Programs:** Brush Head: Vibration 8 speed levels. **Handle:** LED Light Technology: 1 color (red)

### Further information on use:

Do not use the product on irritated or injured skin or open wounds (after any kind of injury), in the case of bacterial or viral infections of the skin (either in the usage area and elsewhere). This product is not intended to treat medical skin conditions or diseases. If you have medical skin conditions or diseases, consult your dermatologist before using this product. Do not use the product if it is 1) damaged or deformed, 2) discolored. If pain and/or discomfort occurs during use, discontinue use and seek medical advice. The product can emit intense light, avoid applying it in the direction of or near an open eye. The eye area is very sensitive: Be extra careful in this area and avoid any contact of the product with the eyelids or the eye itself. For hygiene reasons, we recommend not sharing your product with anyone else. The product is intended for cosmetic use on the face and body. GESKE assumes no liability for harmful consequences arising from any improper use. Always make sure the plug and socket are completely dry before charging. Otherwise, electric shocks, a short circuit or fire may result. The product must not be used while connected to the power outlet.

### Warnings

#### Risk of injury if used incorrectly!

Only use the product as described in the Quick Start Guide and video instructions. If you still have questions, please contact our customer support at support@geske.com.

#### Risk of injury due to fire/ignition!

Do not extinguish the product with water. Do not throw the product into fire.

#### Risk of injury due to defective batteries!

Improper handling of batteries can cause an uncontrolled exothermic reaction. In such a case, dispose of the entire product immediately and properly.

#### Risk of injury to children!

Keep the product out of the reach of children.

#### Risk of injury from electric shock!

Liquid can damage the charging circuit and endanger your health. Disconnect the product from the charging cable/circuit while cleaning.

#### Risk of damage from magnetic fields!

Magnetic fields can affect the mechanical and electronic components such as pacemakers, for example. Do not use the product directly over a pacemaker. Contact your treating physician for more information. Do not place cards with magnetic strips (e.g. credit cards) near the product, as the product's magnets may damage these.

#### Risk of damage due to changing surrounding temperatures!

Changing surrounding temperatures (e.g. after transport) may lead to the formation of condensation. In this case, do not operate the product until it has adjusted to the new surrounding temperature. Never expose your product to direct sunlight, extreme heat or boiling water.

Disconnect the charging cable from the circuit after each charging process.

**Safe charging up to a surrounding temperature of 45 °C/113 °F.**

**Safe use up to a surrounding temperature of 50 °C/122 °F.**

**Risk of damage from charging too long!**



**Information on device disposal and WEEE.** This electrical appliance was first released after August 13, 2005. In accordance with the European WEEE Directive and national regulations, the electrical appliances and electronic parts included in this delivery must not be disposed of via your household waste. At the end of the product life, they must be disposed of at a municipal collection point in order to ensure environmentally friendly disposal.

### Notes on batteries / rechargeable batteries

In the context of distributing batteries and rechargeable batteries, in accordance with European regulations we are obliged to inform you, the consumer, of the following: You are legally obliged to return batteries and rechargeable batteries. After use, you can return them to us, take them to a municipal collection point, or deliver them to a local dealer free of charge. Batteries and rechargeable batteries are labelled as follows:



These symbols mean that the batteries and rechargeable batteries cannot be disposed of by you, the consumer, via household waste. Batteries and rechargeable batteries containing harmful substances are labelled with one of these symbols. The symbol consists of a crossed-out wheeled bin and the chemical symbol of the heavy metal which constitutes the main pollutant. In detail, the aforementioned symbols mean:

Pb = battery contains lead, Cd = battery contains cadmium, Hg = battery contains mercury

### Notes on lithium batteries/rechargeable batteries

You can recognise lithium batteries and lithium rechargeable batteries through the chemical symbol „Li“. In addition to the information provided above, we would also like to point out the following: When disposing of lithium batteries or rechargeable batteries, either by returning them to us, taking them to a municipal collection point or handing them in to local retailers or public waste disposal companies, please ensure that they are completely discharged. We also request that you cover the contact surfaces on the battery marked „+“ and „-“ with adhesive tape to avoid the risk of fire.



GESKE Beauty Tech GmbH, Leipziger Platz 18, 10117 Berlin hereby declares that all electronic devices conform with the relevant conditions of the applicable European Directives 2014/30/EU and 2011/65/EU.

### Limitation of liability

GESKE Beauty Tech GmbH and/or their retailers are liable for damages caused by intentional or grossly negligent behaviour of GESKE Beauty Tech GmbH, a representative or vicarious agent, in accordance with legal directives. With the exception of injury to life, limb or health, and breach of essential contractual obligations (cardinal obligations), GESKE Beauty Tech GmbH and/or their retailers are only liable for damages which can be attributed to intentional or grossly negligent behaviour. This also applies to indirect damages, in particular lost profits. Moreover, liability with regard to consumers due to an assumed guarantee, except in the case of intentional or grossly negligent behaviour, or where there is an injury to life, limb or health and a breach of essential contractual obligations (cardinal obligations) is limited to the typical, foreseeable damages on conclusion of the contract, and also to the level of the average damages typical for this contract. This also applies to indirect damages, in particular lost profits. With regard to companies, except in the case of injury to life, limb or health or intentional or grossly negligent behaviour by GESKE Beauty Tech GmbH, and/or its retailers liability is limited to the typical, foreseeable damages on conclusion of the contract, and also to the level of the average damages typical for this contract. This also applies to indirect damages, in particular lost profits. No liability will be accepted for damages due to: Non-compliance with this manual/improper use/Unauthorised alterations/ Technical modifications/Use of unapproved spare parts/Use of unapproved accessories Claims for liability due to the German product liability legislation remain unaffected.